



# Spalding Parish Church of England Day School

14<sup>th</sup> November 2022

Dear Parent/Carer

Please find below some important information regarding our Foundation Stage.

## HEAD LICE

As you will be aware head lice seem to be causing a small issue in our foundation stage setting. Head lice, although common, are not nice for anyone and the only way that we can get on top of the issue is for everyone to be extra vigilant.

### Some facts:

- (1) Head lice are not an indication of dirty hair.
- (2) Head lice do not spread diseases.
- (3) Head lice solution itself does not irradiate the problem.
- (4) Head lice feed on human blood a number of times a day, it is this that causes the itching.
- (5) Head lice are not only found in long hair.
- (6) Head lice are transmitted through contact but they do not jump.

### What can we all do to help?

- (1) Check your child's hair tonight!
  - Wet your child's hair and add conditioner.
  - Split the hair into sections.
  - Use a fine toothed comb (you can buy specific combs for head lice) and comb through each section.
  - Make sure that you wipe the comb between each run through the hair.



- (2) If you find head lice or eggs then you will need to apply a solution. These can be bought from a supermarket. You must then check the whole family.
- (3) Once the hair has been treated you must continue to comb through the hair every couple of days (see step 1) in order to remove any eggs. If you do not do this then any remaining eggs will hatch and reinfest your child's hair.
- (4) If you have NOT found any head lice then please repeat step 1 every couple of days for the next week.



LINCOLN ANGLICAN  
ACADEMY TRUST  
DIOCESE OF LINCOLN

Clay Lake, Spalding, Lincolnshire, PE11 2QG

Tel: 01775 722333

[enquiries@spaldingparish.laat.co.uk](mailto:enquiries@spaldingparish.laat.co.uk)

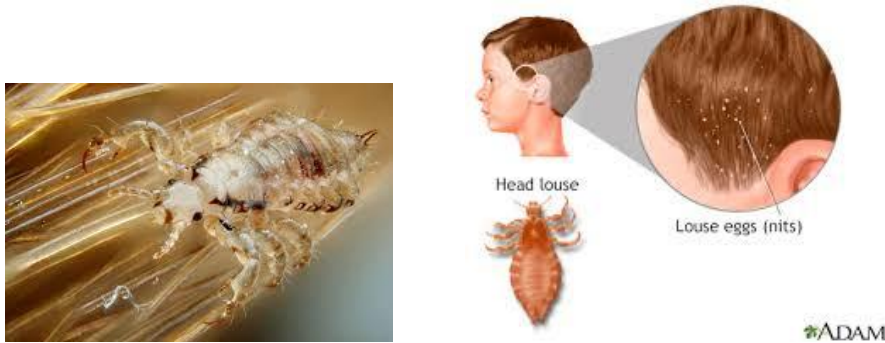
[www.spaldingparish.lincs.sch.uk](http://www.spaldingparish.lincs.sch.uk)

Follow us on Twitter: @SPCEDS

Head Teacher: Diane Mulley

## What am I looking for?

Head lice are tiny! They are very hard to spot which is why it is really important to keep checking.



## How can we work together to prevent head lice?

- (1) Please check your child's hair once a week as part of their bathing routine.
- (2) Please could we ask that all hair is tied back.
  - We are aware that throughout the day hair bobbles may fall out but as a team, we are happy to tie your child's hair back.
  - For hair that is above shoulder length, maybe tie the top section back.
  - Please note that hair grips alone are not enough as they fall out very easily.
- (3) Please talk to your child about the importance of keeping their hair tied up and not sharing hair accessories.

## Why is this so important?

As stated earlier, head lice are really not nice for the person who has them but equally it can be a lot of hard work to get rid of them. In our foundation stage unit we also have a child that suffers with psoriasis which is an acute irritation of the scalp. Every time this child has to have lotion applied it causes an extreme flare up where their head becomes extremely sore so we all need to do everything that we can to protect them.

## NAMED UNIFORM

Please ensure that ALL of your child's uniform is named. If it is not named we will no longer be able to give it back to them. We have a lot of brand new cardigans and jumpers in our cloak room which are not named therefore cannot be returned to you. We will be placing a table outside the Foundation Stage Unit over the next couple of weeks for you to come and find any missing items that we have within school.

We also have a number of NAMED items that seem to have gone missing including a pair of shoes, a cardigan and a school coat. Please can everyone check that the items they have at home are their own.

## HOME LEARNING

### Reading books

Please make sure that your child brings their book to school **every day**. We are at the stage where children will be reading their book daily as they arrive at school and so it is essential that they have these with them. We also hear the children read at least once a week and when they do not have them their progress is limited.

Please also write in their yellow Reading Ramble when you have shared their book at home as this helps us to understand anything that your child is finding hard and how we can further support.

### Red Homework Folders

Please can we make sure that these are also returned to school **every week** so that we can add in the extra homework and support resources for you.



Clay Lake, Spalding, Lincolnshire, PE11 2QG

Tel: 01775 722333

[enquiries@spaldingparish.laat.co.uk](mailto:enquiries@spaldingparish.laat.co.uk)

[www.spaldingparish.lincs.sch.uk](http://www.spaldingparish.lincs.sch.uk)

Follow us on Twitter: @SPCEDS

Head Teacher: Diane Mulley

## SEESAW

Thank you to those of you who have been accessing Seesaw in order to support your child. Seesaw is a learning platform that enables us to not only provide your child with focus activities but also support for you as parents.

Each week your child is set a task to complete that compliments the work that we do in school for Reading and Maths. We have also been adding video's that support you in how we teach both Reading and Maths so that you can continue to use these and support your own child.

To access Seesaw please scan the QR code that is in the front of their Yellow Reading Ramble.

It has been truly wonderful to see many parents engaging with this and adding their own photographs and video's of their child's learning. If you would like to know how to do this then please ask a member of our team and we will gladly help.

## CHRISTMAS CELEBRATION

On Tuesday 13<sup>th</sup> December we would like to invite you to come and share our Christmas Celebration with us. We will be dressing up and performing songs and poems that celebrate this very exciting time of year. Please find the date and time below:-

- Tuesday 13<sup>th</sup> December 9.30am
- Tuesday 13<sup>th</sup> December 2.15pm

You do not need to provide any costumes and there is no ticket requirement so please just turn up with your festive spirit.

## LUNCH AND SNACKS

Please can we remind you that we are a **nut free school**. Even traces of nuts can cause an allergic reaction.

Packed lunches must also please be as healthy as possible. We have seen an increase in sweets, biscuits and crisps in lunchboxes. Please try to ensure a healthy balance of these and note that we are not allowed to let the children eat sweets at school.

If you choose to send your child into school with their own snack and these happen to be grapes, please ensure that these are cut in half as whole grapes are a choking hazard to young children.

A huge thank you in advance for you co-operation and understanding.

Thank you and kind regards  
Annabel Cooper, Kelly Baker and the Foundation Stage Team