



The Parish Post

11th July 2022

Welcome to our newsletter 'The Parish Post'.

The focus will be to share aspects of the children's learning journeys each week across the different Phases and Year Groups. This may be subject specific or across the curriculum. We will also celebrate 'proud moments' across school alongside sharing general updates with parents/carers - #proudtobeParish.

We are keen to receive any feedback regarding your thoughts and also with regards to the content you would like to see included each week. Please get in touch at feedback@spaldingparish.lincs.sch.uk.

At the heart of our diverse community, striving for excellence, enabling all to achieve their highest potential.

'Start by doing what's necessary, then do what's possible; and suddenly you are doing the impossible.'

In this week's Parish Post



- **Read all about it...**
- **Curriculum Corner**
- **Let's Pause for Thought...**
- **General Updates**
- **Local Council Update**
- **Online Safety Update**
- **Community Corner**
- **Weekly Awards**
- **Phase Learning Journeys**
- **Diary Dates**
- **And Finally...**

Read all about it...



Well we're nearly at the end of another school year. It seems unbelievable to think that another year has been and gone however we are all so very proud of all the children have achieved over the year and looking forward to continuing their educational journeys with them on their return in September. Wishing you all a restful and relaxing summer break and we look forward to seeing you on the 6th September.

Good Bye, Good Luck and God Bless!

A couple more goodbyes to say this week. Amelia Fox, our PE apprentice leaves us in September. She is heading off to university to train to be a teacher and so we all wish her the very best as she moves on. Who knows we may see her again in the future when she is qualified! Amelia will be in school in September for a few days, however, before she heads off.

We are also saying goodbye to Sam Williams. Sam holds many roles at Spalding Parish including teaching assistant, lunchtime supervisor and play worker. As you will know she is also our fabulous Crossing Patrol Warden. Sam is leaving us for a complete change of career - she is going to be a lorry driver!

Finally, we are saying good bye to Ella Simpson, one of our HLTAs in school, who is relocating in the summer holidays to Suffolk. As much as we would love her to commute here on a daily basis, this obviously isn't feasible and so we wish her all the very best for the future in her new home.

All three ladies will certainly be missed by the staff and pupils at Spalding Parish and I know you will join me in wishing them all the very best in their future endeavours - Good bye, Good luck and God Bless.

You're
Leaving!
Goodbye and
good luck..
..we'll miss you!

Crossing Patrol Warden

With Sam leaving, this does mean there is now a vacancy for a Crossing Patrol Warden at the beginning and the end of the school day and as such I have been asked to share the details for applying in case there is anyone interested.

If you are interested please apply using the link below. I know the Local Authority are hoping to fill the vacancy prior to September ready for our return to school.

<https://jobs.lincolnshire.gov.uk/vacancy/school-crossing-patrol-487207.html>



School Crossing Patrol
£9.98 Per Hour

Is the safety of children and families on their way to and from school important to you?

We are looking for a reliable, sensible and community minded individuals to join the **Lincolnshire Road Safety Partnership Team** as a Lollipop Person in various locations across the County.

We are keen to hear from those members of the community with good traffic awareness, a sense of responsibility and who are committed to carrying out this very important role.

[Search Our Current Vacancies - Lincolnshire County Council](#)

Lincolnshire
COUNTY COUNCIL
Working for a better future

THIS IS WHAT
**MAKING A
DIFFERENCE**
LOOKS LIKE

Photography of School Events

Once again a huge thank you goes to all of the parents/carers who have attended school events recently. Many of you who have attended in school events in previous years, such a Christmas performances, will know that I share key information from a press release from the Information Commissioner's Office (ICO) in relation to photographs at such events.

As long as the photographs taken are for personal use in a family album they are exempt from data protection laws. However this does mean that **under no circumstances** should they be shared via the internet or social networking sites as this would then mean they are open to a wider public audience and will no longer be deemed to be solely for personal use. This does apply to any photos taken at our recent sports days and will also apply to photos taken as part of our Year 6 Leavers Assembly. If you would like a full copy of the guidance it can be viewed on the ICO website at:

https://ico.org.uk/media/for-organisations/documents/1136/taking_photos.pdf

Thank you for your continued support in this matter. I hope you feel, as I do, that this is the sensible approach to the matter allowing you as parents/carers an opportunity to capture these very special moments in your child's life.



Parent Pay - Reminder

Payments for lunches, trips etc from 4th July onwards can be made through ParentPay in the same way as previously undertaken on Wisepay.

· Lunches for the next academic year onwards will be available to order on ParentPay. If you would like to order lunches for your child for 6th September onwards, you will need to book these through ParentPay. The last date for ordering meals for week commencing 30th August. The menus will go onto ParentPay very soon.

If you have any queries with the process or have not received your Activation Letter, please contact the school office - office@spaldingparish.lincs.sch.uk.

School Office

For parents/carers information the office opening hours during term time are as follows:

Monday: 8am to 4pm

Tuesday: 8am to 4pm

Wednesday: 8am to 4pm

Thursday: 8am to 4pm

Friday: 8am to 3.30pm

I'm sure you will appreciate that the admin team do a fantastic job in what is a very busy office. Whilst we do endeavour to keep the office manned during these times, there are times over the course of the school day when staff need to pop out of the office, e.g. to take late children to the classroom or collect children where there may be medical appointments.

Where this is the case, this is often only for a matter of minutes so we really do appreciate your support and patience if no one is available. On very rare occasions, the answer machine may be used so important messages are not missed. Again this is likely to only be for a short period so if you do need to speak to someone regarding your query and the answer machine is on, we would advise trying again. Thank you in anticipation of your continued support.



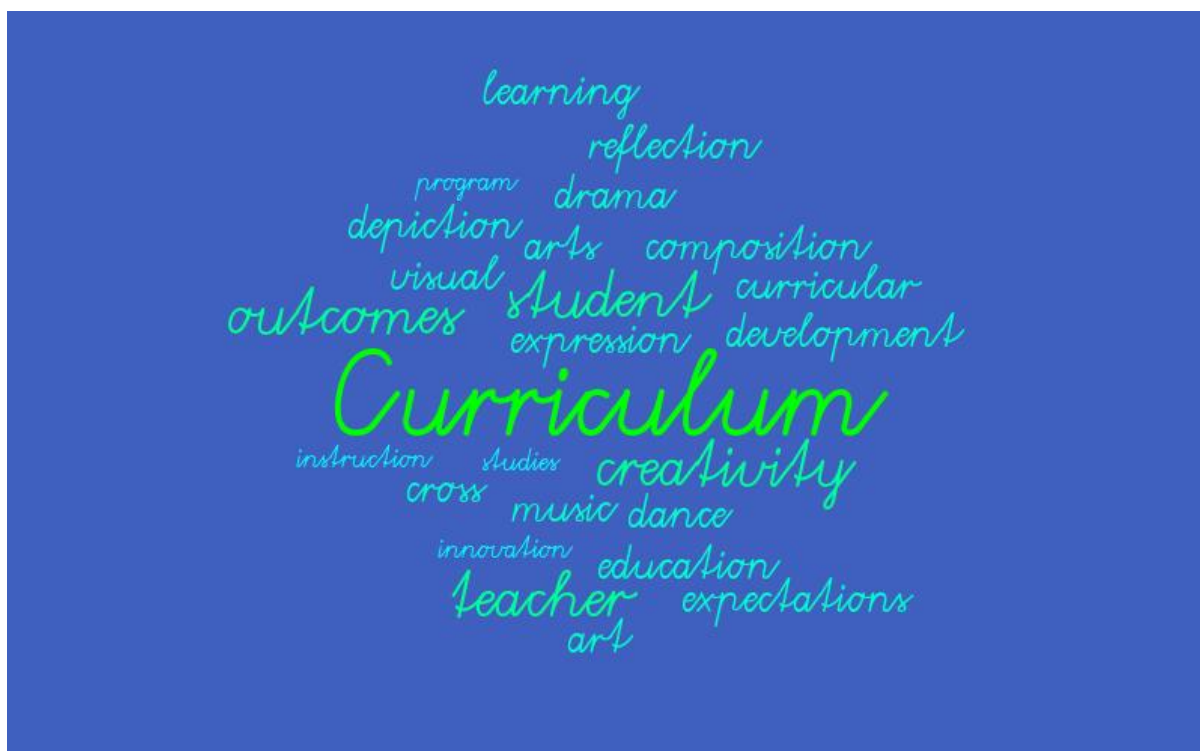
Diary Dates

Just a quick update re diary dates. The key dates for the next academic year will be sent out at the beginning of the year in September. We will send a paper copy for all children so this can easily be accessed throughout the course of the year. We will then also continue to put key dates in the Parish Post alongside a termly update as, whilst we do try to plan all dates at the beginning of the year, some dates do change or get added, e.g. in the case of trips.

Key dates will also be on the website for information. All letters to parents/carers re school events, trips etc. can also be found on the school website via the Parents/Carers link followed by the Newsletters and Information tab.

If you do have any questions re dates, letters or anything else please get in touch with the school office via office@spaldingparish.lincs.sch.uk and they will be able to support you in your query.

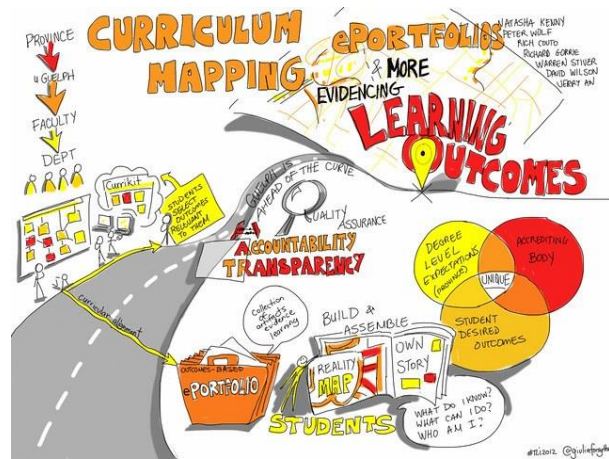
Curriculum Corner



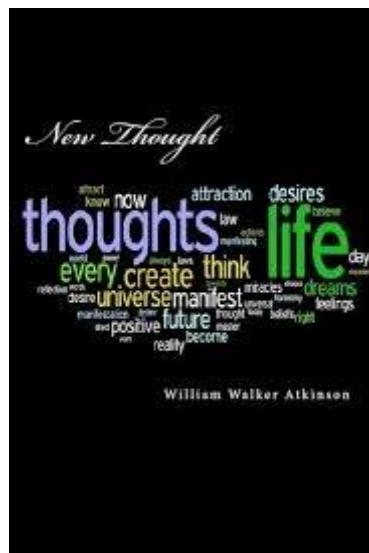
This week as part of our work on curriculum we have been undertaking a review of the school's curriculum over the course of the year. This has included talking to the staff about their findings but also talking to different groups of pupils, along with their relevant books, to review and discuss the learning together. We have introduced this 'Pupil Book Study' approach this year and have found it to be really powerful in allowing the children to be able to share their learning, what they are proud of alongside what has helped them. This in turn also helps us to continue to refine our curriculum moving forwards to ensure it meets the needs of all involved.

It has been an absolute privilege to be able to look at the learning of the children in this way. I know I repeatedly say how brilliant the children are but it is a true fact. We have seen some really powerful pieces of work in the books we have reviewed and it is always a joy to discuss the learning with the children as they also have such a positive view. It is also fantastic to hear how positively they speak about the curriculum.

We are currently finalising the curriculum for next year following this work and all updated curriculum documents will be available on the website from September. As always if you do want to know more about the curriculum we are delivering in school and what your child is learning, please speak to your child's class teacher in the first instance.



Let's Pause for Thought...



Let's think about... ..developing strength

One day a man was passing by a garden when he saw a butterfly cocoon which was about to get open.

He saw a small opening on it and watched the several hours of struggles the butterfly came through to get the body out of it. After many hours, it seemed that the butterfly stopped trying as there was no progress.

He thought to help the butterfly by cutting the cocoon with a scissor. So the butterfly came out easily but the wings were shrivelled and the body was tiny and withered.

Unfortunately, the butterfly was not able to take flight and spend the rest of life crawling with a wounded body.

Moral: This is nature’s way of telling the importance of struggles in life. Sometimes, different kinds of struggles are needed in life to make you stronger in the future. Never feel disappointed in life and stop trying when life offers you struggles but keep on fighting until you see success.



General Updates



COVID Update

From 1st April 2022 the guidance around COVID and testing has been amended, as was previously outlined on the COVID road map and our transition into 'Living with COVID'.

Covid is now specifically referenced in the guidance around the control of infectious diseases and there is no separate COVID guidance. Section 3 is related to management of infectious diseases,

COVID being detailed within the section about Respiratory Infections. Section 4 of this guidance references actions to be taken should there be an 'outbreak'.

For ease, the link to the document is below with the guidance being as follows.

<https://www.gov.uk/government/publications/health-protection-in-schools-and-other-childcare-facilities/chapter-3-public-health-management-of-specific-infectious-diseases>

Essentially – COVID will be treated as we would any other infectious illness. Staff and children will be encouraged to stay at home if they are unwell. Where there is a positive COVID test, the timescales as below are advised:

- 5 days for staff and
- 3 days for pupils.

Further to the above, children/staff with a temperature, should not return to work/school whilst they still have a temperature, but can return with mild cold symptoms and if they are otherwise well enough to be at work/school.

If you do have any questions or queries, please do not hesitate to get in touch.

Start and End of Day Routines - Reminder

Thank you for your support in ensuring pupils are at school on time, it is very much appreciated and does ensure pupils are ready for the start of the day. There does seem to have been some confusion around timings for the beginning and end of day which are as follows:

FS2: Start of Day 8.50am (doors open from 8.40am)	End of Day 3.10pm
KS1 (Year 1 - 2): Start of Day 8.50am (doors open from 8.40am)	End of Day 3.10pm
KS2 (Year 3 - 6): Start of Day 8.45am (doors open from 8.35am)	End of Day 3.20pm

In a morning the gates will open at 8.30am on a morning to allow time to get onto site ready for doors opening at 8.35am (KS2) and close at 8.55am.

Similarly, on an afternoon, the gates at the end of the day will open at 3.05pm ready for end of day at 3.10pm (KS1) and close at 3.30pm.

These timings do need to be adhered to at the beginning and end of day to ensure our safeguarding requirements are met so we would appreciate your support with this. If you do have any concerns, please speak to a member of the Senior Leadership Team.

When on the site please be courteous and stand away from the classroom windows and doors as pupils will still be learning until the end of the school day.

If we could also please ask that school equipment, including the gym equipment on the playgrounds, is not used at the beginning or end of the day. We appreciate that this is very tempting but use needs to be supervised by school adults so if you could please ensure your children do not use. This will ensure that pupils and families are able to stay safe.



Attendance - a further reminder

As we continue the return towards normality, attendance continues to be closely monitored, particularly given current absences.

Please remember if your child is unwell and unable to attend school, you should inform school by 9.30am that day in line with our school procedures. Please contact school on each day of absence unless otherwise agreed.

Also please remember that routine dental and medical appointments should not be made during school time. It is preferable and much more beneficial for pupils if appointments can be made either at the end of the school day or during school holidays. If you do have to make an appointment for during the school day, and we do appreciate that there are times when this may be necessary, please bring the appointment letter to the school office. Without this letter the absence will not be authorised.

We are also seeing an increase in leave of absence requests. Current Government regulations mean that absence from school can only be authorised for “exceptional circumstances” for which there is very clear established criteria, again set by the Government.

It is therefore highly unlikely that time off school will be authorised during term time.

Requests for term time absence, for any reason, must be made at least 10 days before the absence, except in emergencies, by booking an appointment with a member of the Senior Leadership Team.

Should an appointment not be made, and in line with our safeguarding procedures and Government regulations, we will contact you with regards to your child’s absence in order to clarify fully the reasons for absence. Your child’s education is our primary focus and given the extensive research proving a direct link between good attendance and good outcomes, alongside the national attendance guidance for schools, we do follow all absences up. This is not about singling anybody out but simply carrying out our statutory duty as a school and as such I would ask for your support in communicating with us in a positive way. Thank you in anticipation of your continued support.



Safeguarding

Safeguarding is an important part of our work with children and young adults so we will keep this reminder in each edition of the Parish Post. Safeguarding is the responsibility of all of us.

If you have concerns about the safety of any child, please let somebody know.

Diane Mulley and Emily Hill are the designated safeguarding officers within the school. Similarly if you do require any support, please do not hesitate to get in touch.



A Plea to Parents/Carers...

SPCEDS is a large and busy school community and we know that parents and carers will sometimes have questions about school and school life. As you will hopefully know, we are keen to support parents/carers with any questions, worries or concerns.

We also know that many of you do follow the Parish Parents page on Facebook and use this as a source of information - for many it is invaluable. Whilst the page has no direct link to school we understand that parents and carers are always very supportive of each other through this page answering questions and sharing information. As such I just wanted to remind parents and carers that if you do have any questions, you can always contact the school with the feedback@spaldingparish.lincs.sch.uk email regularly monitored. Similarly if you do need to speak to a member of the staff team, please contact the school office and one of us will be in touch to answer your queries.

School Uniform

As we head into the summer months, a reminder for parents/carers of expectations regarding school uniform. We are all very proud of our school uniform and as such, we would ask for the support of parents/carers in ensuring correct uniform is worn. **This includes footwear and school shoes should**

be worn on all days other than PE days. Please be aware that open toed shoes or sandals are not appropriate for school.

Boys and Girls

Purple Sweatshirt or Cardigan

Purple or White Polo Shirt

Grey Trousers, Dress or Skirt

Purple, Red or Yellow Gingham Summer Dress

Plain Grey, Black or White Socks or Tights

Flat Black Shoes - No trainers or heels

No nail varnish

Jewellery – only stud earrings or small objects of religious significance (these must be removed on PE days).

All items to be clearly named.

It is a fantastic sight to see the children so smart in their uniforms. As part of this we also encourage the children to wear their uniforms with pride with t-shirts tucked in and jumpers either worn properly (and not tied round the waist) and again thank you for your support with this.





PE KIT

Navy Blue/ Black Shorts

Purple T-Shirt

Tracksuit

Plimsolls or Trainers

No earrings or jewellery to be worn on PE days

Please support children to be independent when getting changed. Ensure they can recognise their name and items of clothing.

For the time being pupils are still asked to wear PE kit on their PE days (see below for details). We have maintained this to maximise learning time in this area. However, PE kit worn on these days should be in line with our PE kit expectations. Should this not be the case a member of staff will speak to you with regards to this.

We have recently had a number of queries re support with uniform and do have quite a large range of second hand uniform that is in really good condition. We are more than happy to support where we can so please get in touch via the school office if this is something that would help. If you could please let us know sizes required and we can then have a look.

Finally, we would please ask that all parents/carers ensure pupils are wearing appropriate uniform colours and not anything other than those stated above. Please also ensure no logoed items as these are not in line with our uniform expectations and so should not be worn.

	INDOORS	OUTDOORS
FS2		Thursday
Year 1	Friday	Wednesday
Year 2	Thursday	Tuesday
Year 3	Wednesday	Thursday
Year 4	Monday	Wednesday
Year 5	Wednesday	Tuesday
Year 6	Friday	Wednesday



Local Council Update



LINCOLN ANGLICAN
ACADEMY TRUST

DIOCESE OF LINCOLN

Local Council

Our next article from the Local Council is from Rev John Bennett, in his role as Local Council Member.

Rev John Bennett

About a quarter of primary schools, with approximately one million children, are Church of England schools. Spalding Parish is one of them.

Anyone may attend a Church of England school whatever their family's beliefs. In church schools Collective Worship reflects the beliefs and teaching of the Church of England. Religious Education focuses on Christianity and pupils learn about other faiths and world views to understand how what we believe affects what we say and do.

Parents are required to ensure that their children attend school by law. Belonging to a church is entirely voluntary. Schools are funded from taxation. Churches are charitable organisations that rely on donations.

Church schools teach Christian values that are good for anyone to live by regardless of their religious beliefs. Churches encourage a relationship with God through coming together for worship, teaching and caring for people.

Church schools are separate from churches, but there is usually a good connection between them. Revd Aileen and I really enjoy being included in Spalding Parish School especially when we meet and talk with the children. We welcome children and their families to be part of Spalding Parish Church as members of the community of regular worshippers.

Members of the Local Council are supportive of the ethos of a Church School and of maintaining its distinctive Christian character. As a member of the Local Council and Vicar of the Parish Church I want to encourage as many links between the church and the school as possible.



Online Safety Update



A regular addition to our weekly Parish Post is the Online Safety Update. Each week we will post some tips and suggestions just to support keeping children safe online. For this we will also share key tips from National Online Safety and their Wake Up Wednesday materials. If you do want any further details with regards to this or would like any further support please speak to your child's class teacher or a member of the Senior Leadership Team.

Minecraft

The biggest selling video game of all time. However, even the mighty Minecraft isn't totally immune to #Online Safety risks. Our updated #WakeUpWednesday guide brings trusted adults the lowdown on this established children's favourite.

https://nationalonlinesafety.com/guides/minecraft-2022?utm_source=twitter&utm_campaign=nos-wakeupwednesday-minecraft

Community Corner



With the continued relaxation and removal of restrictions, life is slowly but surely returning to normal. This includes activities within the school but also activities within the local community.

As such, via the Community Corner, we will aim to share different activities/events happening within the local community that may be of interest to pupils and families of Spalding Parish.

This week it is the turn of the St Mary and St Nicolas Church Choir. Boys aged 7 and over are invited to give Choir Club a try. It is held every Wednesday during term time at St Nicolas Church Hall from the end of the school day until 6pm. Many boys from SPCEDS already attend and have a great time so if you think this might be for you, give it a try.

Spalding Parish Church Choir Club

You are invited to become a member of Spalding Parish Church Choir for boys aged 7 years and over.

Who knows ... *you* could be a future 'Britain's Got Talent' winner, or the next Ed Sheeran



Our Choir has sung in many famous venues including St. Paul's Cathedral and Westminster Abbey in 2019

On Wednesday afternoons we have Choir Club, where boys can play football, snooker, table football, cricket in the summer, and other games. There is a tuck shop, and also free refreshments

We have outings throughout the year, including ten pin bowling and swimming. **All completely free.**

Initially we invite you to come along and 'have a go' ...

Invitation to Choir Club on a Wednesday after school

We hope that you will come along to see if you enjoy our Choir Club - with the added advantage that there is no cost at all, unlike most clubs!

We look forward to seeing you on a Wednesday, during term time, after school, (until 6pm) in the St. Nicolas Church Hall, next to Spalding Parish Church, near Ayscoughfee.

Contact Nick Pitts - Tel: 01775 766081 for more information

Weekly Awards



Head Teacher Awards

Each week pupils in school are nominated for Head Teacher Awards celebrating their achievements be it academic success, sporting success, fantastic manners, role model behaviour or indeed anything else worthy of note. Well done to all award winners!

EYFS: All of FS2 for being absolute superstars this year

Year 1: All of Year 1 for being absolute superstars this year

Year 2: Andrei and Harmony Rose (Y2SD), (Y2AR), Katie (Y2DO), All of Y2AR (Y2AR)

Year 3: Stanley (Y3NPSE), Oscar (Y3SH), Rassels (Y3EP)

Year 4: Anton (Y4CH), Liliana (Y4RW)

Year 5: Cassidy (Y5KB), Jessica (Y5IN), Robyn (Y5EW)

Year 6: Sapphire (Y6CC), Vasil (Y6KR), Paige (Y6AS)



Attendance Awards

Attendance and punctuality are attributes that are essential as children grow up and this is the time of their lives when they learn them.

A number of weekly and termly incentives and awards are in place to reward pupils who attend regularly and who are punctual for school at the start of the school day.

Our weekly attendance awards celebrate the class with the highest attendance in each Phase.

FS2: FS2Y1AC (92.9%) - FS2Y1AC are our best attender in FS2 this week, well done!

KS1: Y2DO (95.9%) – New winners in KS1 with Y2DO highest this week in KS1, great work!

LKS2: Y4CH (100.0%) – Highest in LKS2 for Y4CH and highest in school with 100%!

UKS2: Y5KB (97.6%) – Y5KB are the winners in UKS2 this week, fantastic!

School: 91.9% - Another slight decrease in our attendance this week. Let's keep working hard to ensure we are all in school and moving towards the Government target of 97.0%. Let's keep trying.

House Points

Each week pupils are awarded house points as a reward, with a weekly winner from our 6 SPCEDS House Teams:

Spiritual Solvers

Positive Promoters

Challenging Challengers

Exciting Experts

Dynamic Dynamos

Supportive Supporters.

This week's winners are **Spiritual Solvers with 760 points.**



Phase Learning Journeys

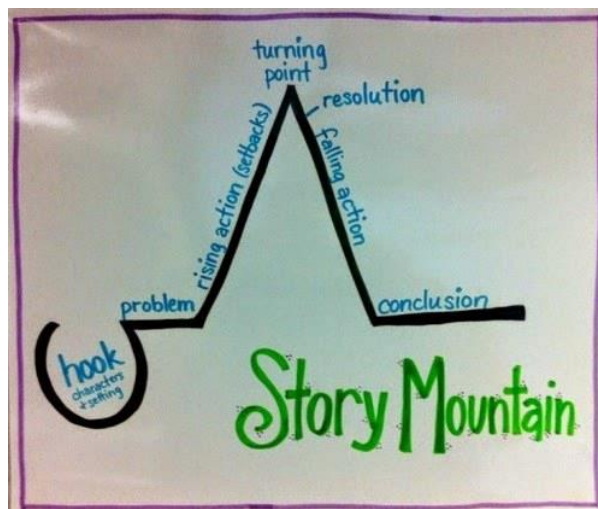


Key Stage 1

We're back in Year 2 this week to hear all about their learning over the last fortnight.

Year 2

This week Year 2 have begun to plan and write our own dragon stories using our visit to Lincoln Castle and Lucy the Dragon sculpture. We have looked at the structure of a story using story mountains and used the learning power of imagination lots to make our stories as interesting as possible.

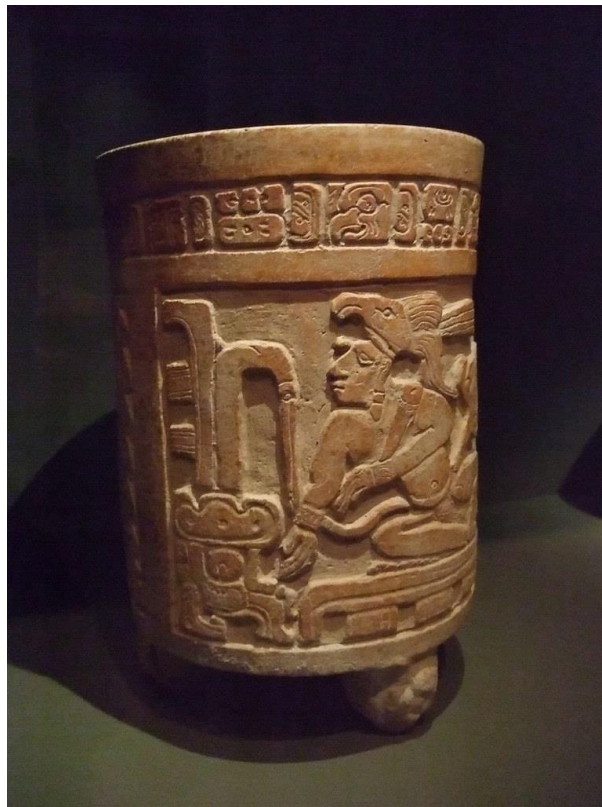


Lower Key Stage 2

A week in focus for Year 4 this week.

Year 4

It's been a busy week for Year 4. In Art we have been developing our sculpture skills by using clay to make pots using coiling. The children have thought lots about their History topic, The Ancient Maya, and carved Mayan inspired designs onto their pots, which are now ready for painting for them to take home and enjoy at the end of the school term.



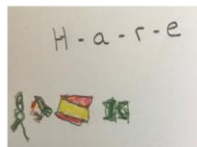
Upper Key Stage 2

Year 6's learning is the focus of the Parish Post this week.

Year 6

With eventful week after eventful week, Year 6 continue to finish their time at Spalding Parish in style. In addition to a residential trip, a theatre trip, creating a Joseph Hillier-style sculpture out of clay, and all the money-making ideas generated for Make £5 Grow, there was another competition up for grabs involving a 3D printer!

The whole year group was tasked with designing a 3D model (online using Tinkercad) which represented SPCEDS. Fortunately, we were then able to print the winning designs – as judged by all Year 6 staff – on a 3D printer loaned by Mrs Potts (“Thank you Mrs Potts!”) One of the models took 9 hours to print!!



Diary Dates



Week Beginning 18th July

Monday 18th July - Whole School Collective Worship

Tuesday 19th July - Year 6 Leavers Assembly 2pm

Wednesday 20th July - Whole School Collective Worship

Thursday 21st July - Year 6 Leavers Celebration/Treat

Friday 22nd July - Whole School Church Service 10.30am

End of Term 6 (FS2/KS1 3.10pm / KS2 3.20pm)

We wish you all a restful summer break and look forward to seeing you all on Tuesday 6th September.

And Finally...

Please remember if you do have any queries or concerns to come and speak to one of us, either the class teacher on the door or a member of the SLT on the playground each morning and afternoon.

You can also get in touch via email, using feedback@spaldingparish.lincs.sch.uk or the Year Group emails.

EYFS - FS2@spaldingparish.lincs.sch.uk

Key Stage 1 - Y1@spaldingparish.lincs.sch.uk or Y2@spaldingparish.lincs.sch.uk

Lower Key Stage 2 - Y3@spaldingparish.lincs.sch.uk or Y4@spaldingparish.lincs.sch.uk

Upper Key Stage 2 - Y5@spaldingparish.lincs.sch.uk or Y6@spaldingparish.lincs.sch.uk